



**Automated Covering Systems**

## Radio Frequency Control Switch for Tarp Motors

### ***Quick Start Guides:***

- 1. Safety Features***
- 2. How to Operate System***
- 3. Transmitter Pairing***
- 4. Creating Multiple Transmitters***
- 5. Maintenance and Troubleshooting***

Part Number 105686



Automated Covering Systems

# ***This Document Contains Five Quick Start Sections***

**Product Warning (Page 3)**

**Section One: System Safety (Page 4)**

- 5. Tarp Motor RF Component Label Chart
- 6. Understanding the 3 Modes of RF Operation
- 7. When to Use Each of the Operating Modes
- 8. Locking Out Tarp System During Driving
- 9. Transmitter “Auto Power Off” Function

**First Time Users Should Know all Safety Features**

**Section Two: Operating the System (Page 10)**

- 11. The Transmitter LED Light
- 12. Using the Transmitter for the First Time
- 13. Operating the Tarp System from the Receiver
- 14. Operating the Tarp System from the Transmitter

**This is How to Operate the System in All Modes**

**Section Three: Transmitter Pairing (Page 15)**

- 16. Transmitter Pairing Introduction
- 17. Pairing Transmitter to Tarp Motor Receiver

**Section Four: Creating Multiple Transmitters (Page 19)**

- 20. Master and Copy Transmitter Configurations
- 21. Determining if the Transmitter is a MASTER or Copy
- 22. Changing a MASTER Transmitter to a Copy Transmitter
- 23. Creating a Copy Transmitter from a MASTER Transmitter

**These sections are used for System Service and System Maintenance**

**Section Five: Maintenance and Troubleshooting (Page 24)**

- 25. Changing the Transmitter Battery
- 26. Troubleshooting the Receiver
- 27. Troubleshooting the Transmitter

# **WARNING**

***Failure to Read and Follow all instructions in the Product User Guide may result in serious injury or damage to property.***



***The information icon shown above will be observed during the review of this Quick Start Guide. This information icon indicates that additional important information is in the Product User Guide (Roll Rite Instruction Part Number 105563).***

# Section One

## SYSTEM SAFETY

**AUTO-POWER-OFF FEATURE**  
**SYSTEM LOCK-OUT FEATURE**



*To prevent serious damage, do not operate the tarp system while the vehicle is on the road. The features described here have been included to prevent operation of the tarp system while the vehicle is in motion.*

***DO NOT use the remote control while the vehicle is in motion***

***DO NOT operate the tarp from the receiver while the vehicle is in motion***

# Tarp Motor RF Component Label Chart

## RECEIVER



LED Status Indicator

Uncover  
Open

Cover  
Close

Pair  
Button

## TRANSMITTER



LED Indicator

Transmitter  
ON

Transmitter  
OFF

Cover  
Close

Uncover  
Open

# Understanding the 3 Modes of RF Operation



1

Operate Tarp from  
Either Receiver or  
Transmitter

From  
Transmitter:  
Press On  
and Uncover  
for > 3  
Seconds

From  
Transmitter:  
Press OFF  
  
-OR-  
  
Wait 5  
Minutes

Unplug Trailer  
Power  
  
-OR-  
  
On  
Receiver:  
Press Cover +  
Uncover for >  
3 Seconds

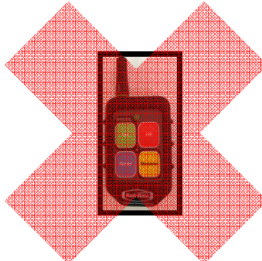
Plug Trailer  
Power In  
  
-OR-  
  
On Receiver:  
Press Cover +  
Uncover for >  
3 Seconds

Lock Out  
Transmitter  
-----  
Operation from  
Receiver Only

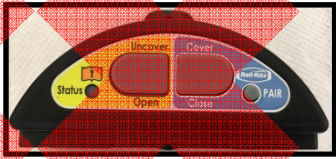
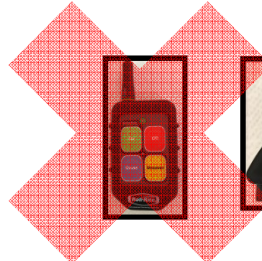
2

Lock Out Receiver  
-----  
No Operation Will  
Occur


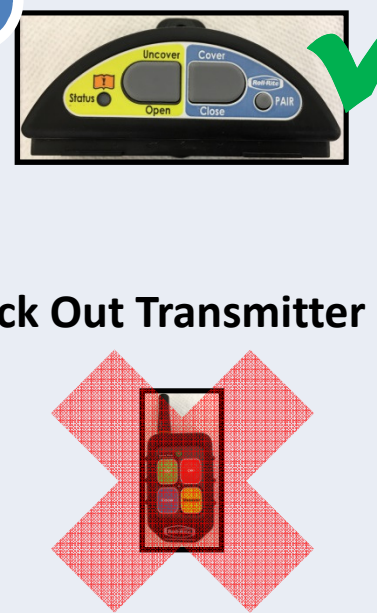
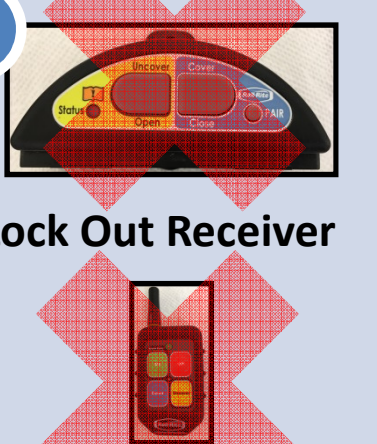
3



6



## When to Use Each of the Operating Modes

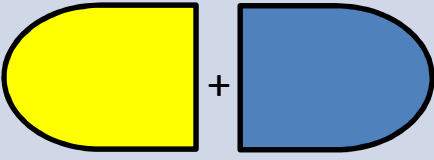
Mode 1, 2, or 3	Tarp Control	When to Use
<p><b>1</b></p>  <p><b>Normal Operation</b></p>	<p>Receiver Control is <b>Enabled</b></p> <p>Transmitter Control is <b>Enabled</b></p>	<p><i><b>Use this mode when:</b></i> Operator wants to use Receiver (outside) or Transmitter (inside truck cab)</p>
<p><b>2</b></p>  <p><b>Lock Out Transmitter</b></p>	<p>Receiver Control is <b>Enabled</b></p> <p>Transmitter Control is <b>DISABLED</b></p>	<p><i><b>Use this mode when:</b></i></p> <p>RF transmission is not allowed at a facility or within a fleet</p> <p style="text-align: center;">-or-</p> <p>The vehicle is in motion on private or public roads</p>
<p><b>3</b></p>  <p><b>Lock Out Receiver</b></p>	<p>Receiver Control is <b>DISABLED</b></p> <p>Transmitter Control is <b>DISABLED</b></p>	<p><i><b>Use this mode when:</b></i></p> <p>The vehicle is in storage or in a service bay and it is not possible to disconnect power to the tarp system</p>

## Locking Out the Tarp System During Driving

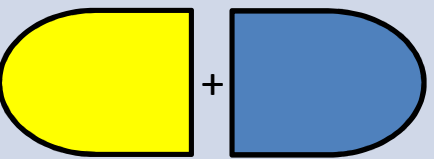
*There are two methods to prevent the tarp system from operating while the vehicle is on the road*

Action	System Response	Mode
Unplug Power on Trailer to disconnect power to system	None	<b>“Lock Out”</b> System will not respond to receiver or transmitter commands until the system is powered

*- Or -*

Action	System Response	Mode
<p>On the Receiver</p>  <p>&gt; 3seconds</p>	<p><b>Receiver LED</b> Flashes 3 Times While Buttons are Pressed</p>	<p><b>“Lock Out”</b> System will not operate from Receiver or Transmitter until the system is unlocked</p>

## Unlocking the Tarp System After Driving

Action	System Response	Mode
<p>On the Receiver</p>  <p>&gt; 3seconds</p>	<p>After 3 Seconds Has Passed the <b>Receiver LED</b> Flashes 1 Time</p>	<p><b>“Operating”</b> System will operate from Receiver or Transmitter until the system is unlocked</p>



## Transmitter "Auto Power Off" Mode

To prevent tarp system from running while on road, the Transmitter will lock out automatically after 5 minutes.

To start transmitter do the following 3 steps:



1. Make Sure the Receiver is **NOT in LOCK OUT mode** see "Locking Out Tarp System Receiver"

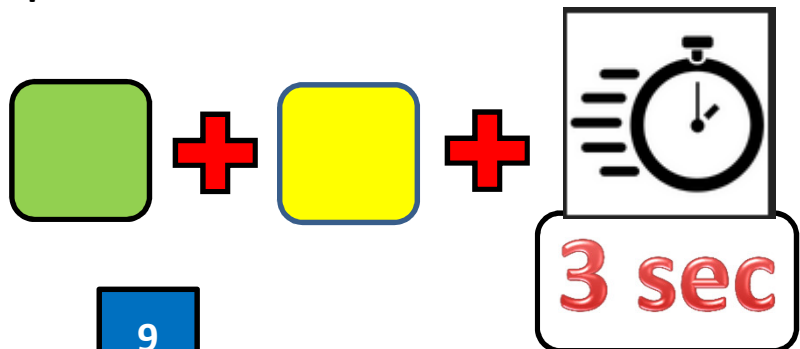


3 5X Flash Indicates Receiver and Transmitter are Both Ready to Operate System

2. Press On + Uncover for greater than 3 seconds, then release.

The Transmitter **RED LED** will flash once buttons are pressed, then again after 3 seconds have elapsed.

3. The Receiver will flash 5 times, indicating the system is ready for Operation from Transmitter



# **Section Two**

## **OPERATING THE SYSTEM**

## *The Transmitter LED Light*



When the transmitter is operating, the **RED LED** flashes rapidly when a button is pressed. *This Indicates that communication is working between the transmitter and receiver.*


If the **RED LED** does not flash when a button is pressed, *the transmitter is not communicating.* Place Receiver in Operating Mode first, then place Transmitter in Operating Mode to continue.

# Using the Transmitter for the First Time

1 **DO NOT pair the Transmitter to the Receiver.** When transmitter and receiver are shipped together, they have been paired by Roll Rite prior to shipping.

2 Connect the Receiver to the Motor Controller per the instruction document 105563. When power is connected to the receiver, the **RED LED will FLASH ONCE.** The Receiver is **ON.**








3 On the Transmitter:  
Remove the plastic battery tab.  **PULL**  
Press and hold the GREEN and YELLOW button for 3 seconds, then release.

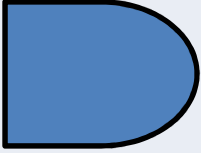
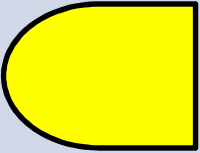
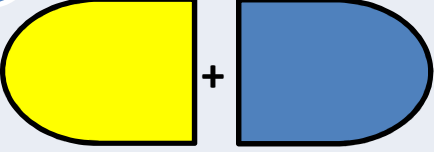
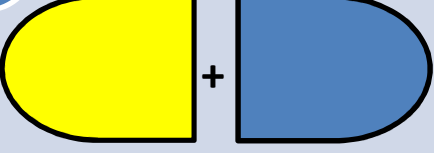
The **RED LED** will flash as soon as you press the buttons and again after 3 seconds have passed. The Receiver **RED LED** will flash 5 times, indicating the system is ready to run from the transmitter.



## Operating Tarp System from the TRANSMITTER

ACTION	Receiver LED & Transmitter LED	TARP SYSTEM MODE
<p><b>1</b></p> <p>Plug in Nose Plug on Trailer to connect power to system</p>	<p><b>Receiver LED</b> Flashes 1 Time</p>	<p><b>“Operating”</b> System is now ready for command</p>
<p><b>2</b></p> <p><b>PRESS AND HOLD</b></p> <div style="display: flex; align-items: center; justify-content: center;">  <span style="margin: 0 10px;">+</span>  </div> <p><b>&gt; 3 Seconds</b></p>	<p><b>Transmitter LED</b> <i>flashes once</i> when pressed then flashes again after 3 seconds</p> <p><b>Receiver LED</b> flashes 5 times</p>	<p><b>“Operating”</b> System is ready to take commands from Transmitter</p>
<p><b>3</b></p> <p><b>Press Cover</b></p> 	<p><b>Transmitter LED</b> will flash rapidly</p> <p><b>Receiver LED</b> will flash 5 times</p>	<p><b>“Cover/Close”</b></p>
<p>or</p> <p><b>3</b></p> <p><b>Press Uncover</b></p> 	<p><b>Transmitter LED</b> will flash rapidly</p> <p><b>Receiver LED</b> will flash 5 times</p>	<p><b>“Uncover/Open”</b></p>
<p><b>4</b></p> <p><b>Press Transmitter Off &gt; 1 sec</b></p> 	<p>No LED Lights</p>	<p><b>“Transmitter OFF”</b> Tarp System will Not Operate Using Transmitter</p>

## Operating the Tarp System from RECEIVER

ACTION	RECEIVER LED INDICATOR	TARP SYSTEM MODE
<p><b>1</b> Plug in Nose Plug on Trailer to connect power to system</p>	<p><b>Receiver LED</b> Flashes once indicating power is <b>ON</b></p>	<p><b>“Operating”</b> System is now ready for command</p>
<p><b>2</b> Press the Cover</p>  <p><b>Button</b></p>	<p><b>Receiver LED</b> Illuminated <b>SOLID</b> while system is operating</p>	<p><b>“Covering”</b> System Follows One-Touch Operation if connected to One-Touch Motor Relay</p>
<p>or</p> <p><b>2</b> Press the Uncover</p>  <p><b>Button</b></p>	<p><b>Receiver LED</b> Illuminated <b>SOLID</b> while system is operating</p>	<p><b>“Uncovering”</b> When Used System Follows One-Touch Operation if connected to One-Touch Motor Relay</p>
<p><b>3</b> <b>PRESS and HOLD</b></p>  <p><b>For 3seconds</b></p>	<p><b>Receiver LED</b> Flashes 3 Times while the buttons are pressed</p>	<p><b>“Lock Out”</b> System will not operate from Receiver or Transmitter</p>
<p><b>4</b> <b>PRESS and HOLD</b></p>  <p><b>&gt; 3seconds</b></p>	<p>After 3 seconds, the <b>Receiver LED</b> Flashes 1 Time</p>	<p><b>“Operating”</b> System will respond to Receiver or Transmitter commands</p>

# Section Three

## PAIRING A REPLACEMENT TRANSMITTER



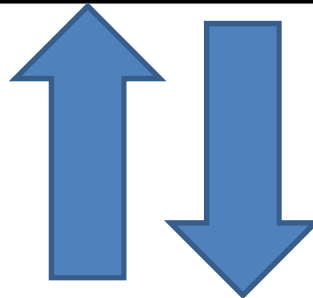
*Use this section only when replacing an old RF  
Transmitter with a new RF Transmitter*

*When Receiver and Transmitter are purchased as a set,  
they are paired prior to shipping*



# Pairing the Tarp Motor Transmitter

**IMPORTANT NOTE: When Transmitter and Receiver shipped together they have been paired prior to shipping.**

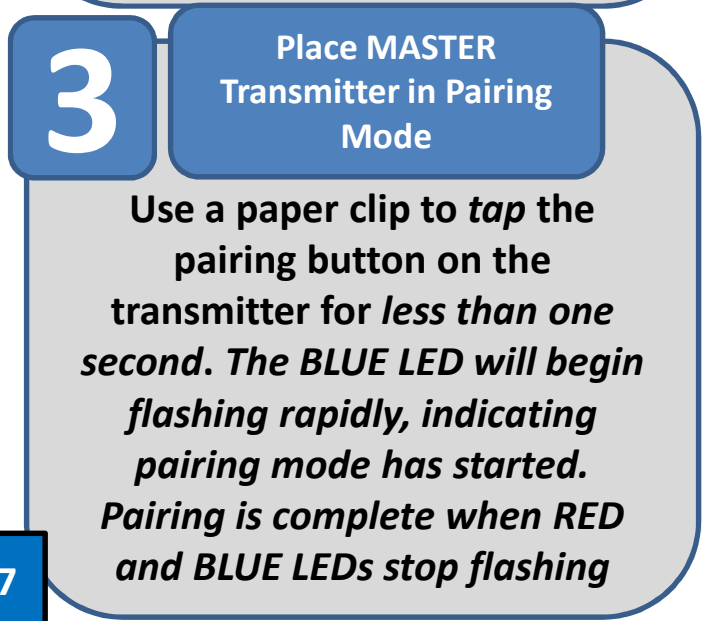
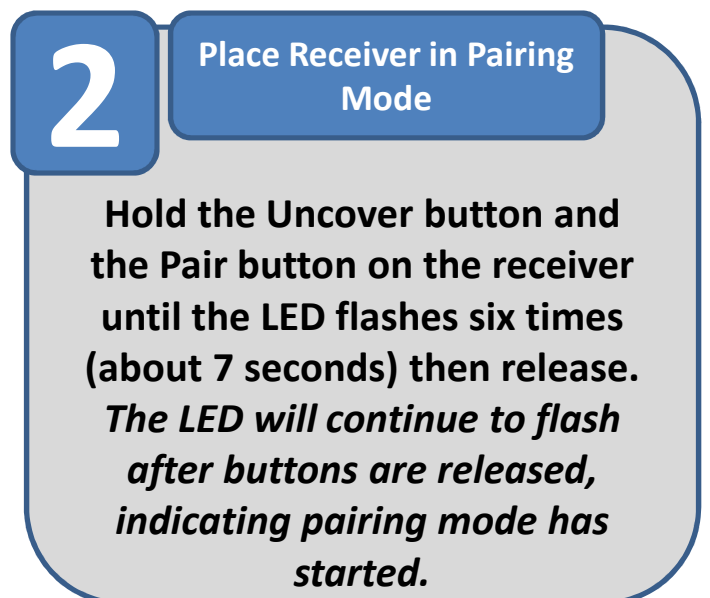
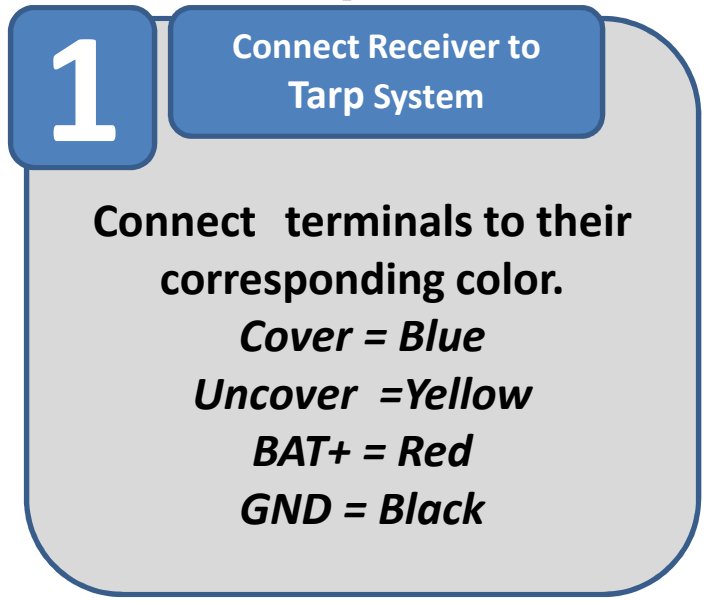


**MASTER**

**Prior to Pairing a new FIRST REPLACEMENT transmitter to the Receiver, make sure the Transmitter is configured as a MASTER TRANSMITTER, see next section**



# Pairing the Transmitter with the Tarp Motor



# Pairing the Transmitter with the Tarp Motor



4 Pair *Tarp Control* Buttons to Receiver

Press the **COVER** button on the transmitter to associate the receiver with the transmitter function. *The receiver LED will blink once.*



5 Check Tarp Motor Function

When pressing Transmitter buttons, you will see the RED LED flash rapidly, indicating the message is transmitting. During *Covering* or *Uncovering* the trailer, the RED LED will be solid. After the system has completed, the receiver will blink 5 times. After the test, turn the Transmitter Off by pressing OFF for ½ second.



6 Check Transmitter Power On

Hold the **ON** and **UNCOVER** buttons for greater than three seconds to turn on transmitter. The Transmitter RED LED will flash when the buttons are pressed and again after 3 seconds. The receiver will blink 5 times.

# Section Four

## CREATING MULTIPLE TRANSMITTERS



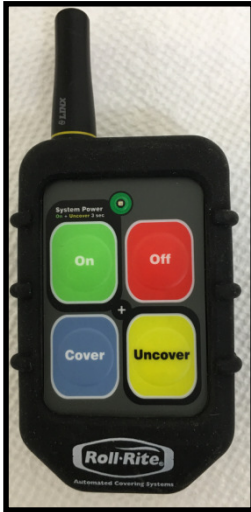
*Use this section only when creating two or more transmitters for one receiver*

*NOTE: When Receiver and Transmitter are purchased as a set, they are paired prior to shipping*

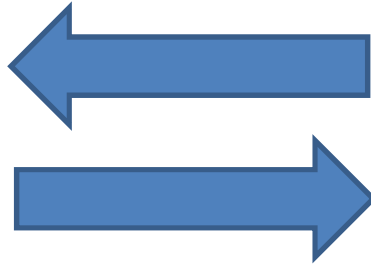


# Master and Copy Transmitter Configurations

Standard Systems Include One Paired Transmitter and One Receiver



MASTER

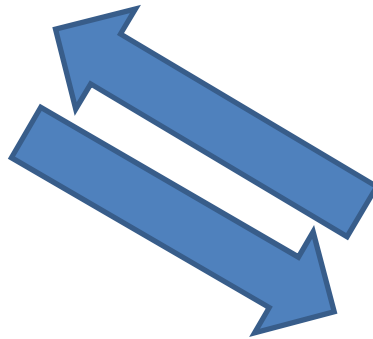


*In this configuration, the transmitter will always be set up as a MASTER transmitter*

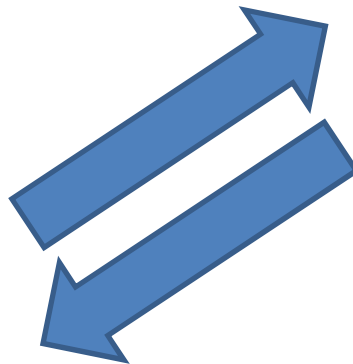
It is possible to have multiple transmitters with one receiver



MASTER

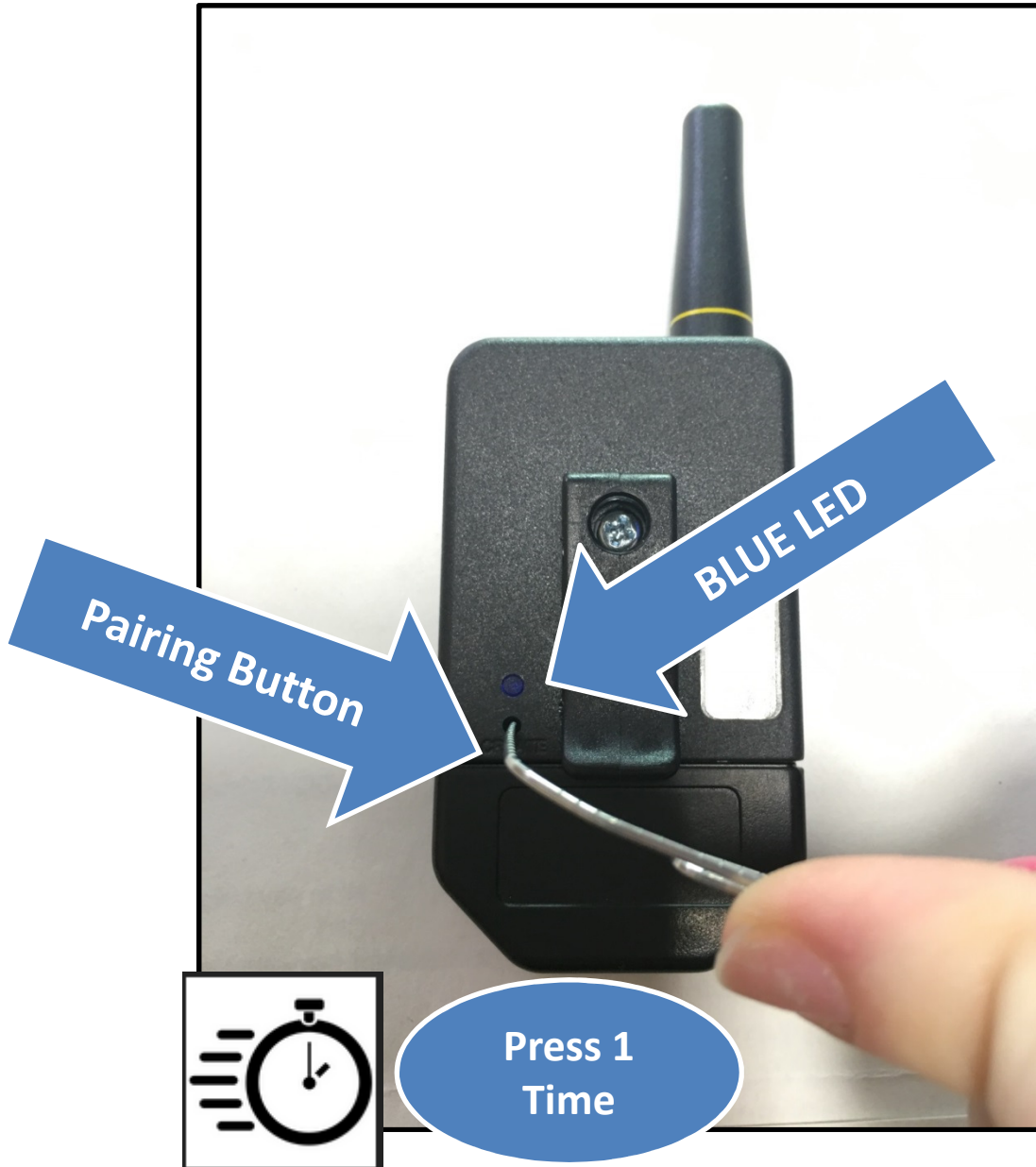


Copies



*In this configuration, there is one MASTER transmitter. All other transmitters will be configured as Copies configured from the MASTER transmitter*

## ***Determining if the Transmitter is a MASTER OR Copy***

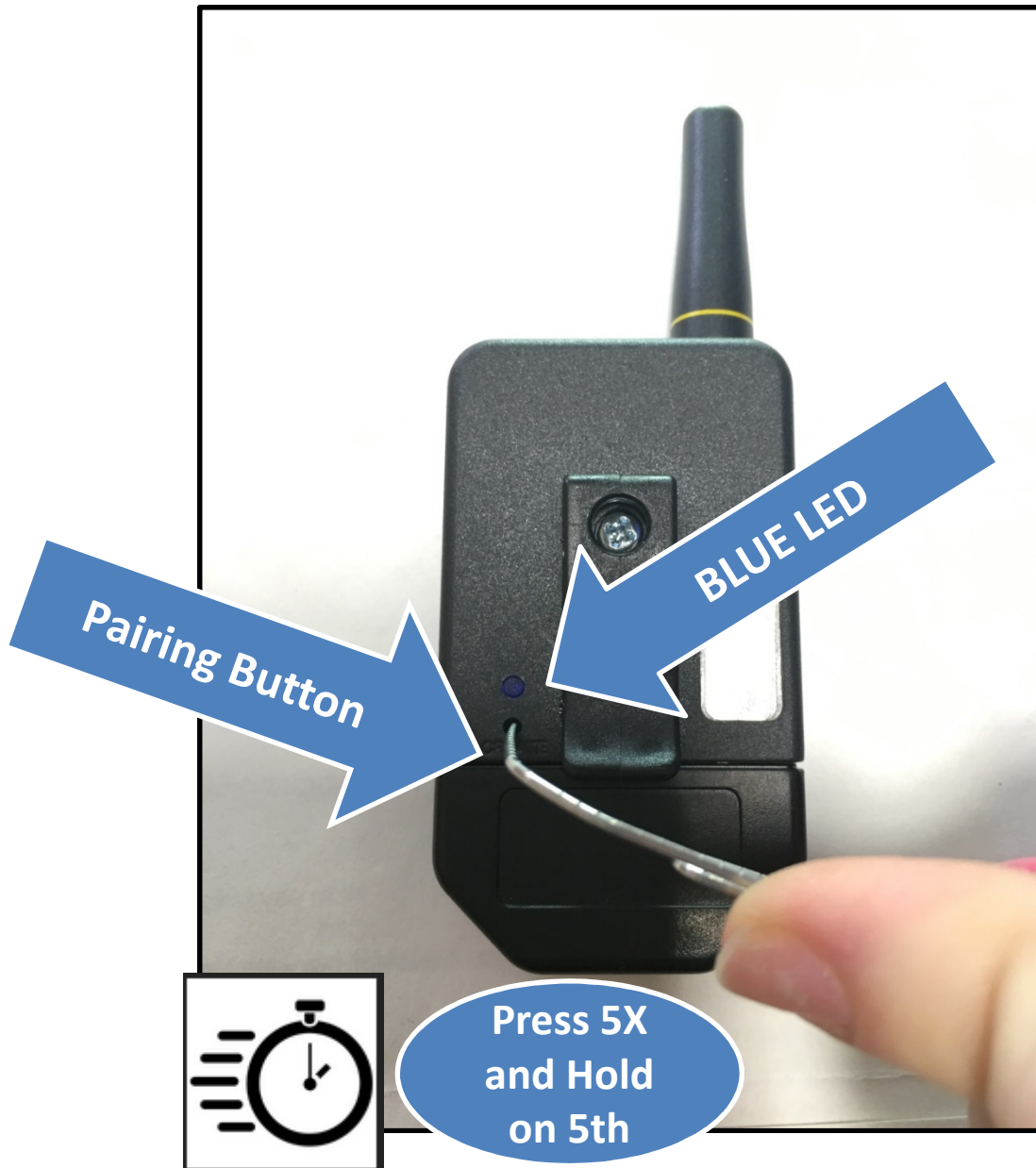


- 1. Press the pairing button 1 time and release***
- 2. Watch the BLUE LED. The BLUE LED will flash 1 or 2 pattern flashes repeatedly for about 10 seconds***

***One Flash Pattern on LED Indicates the Transmitter is a Copy  
Two Flash Pattern on LED Indicates the Transmitter is a Master***

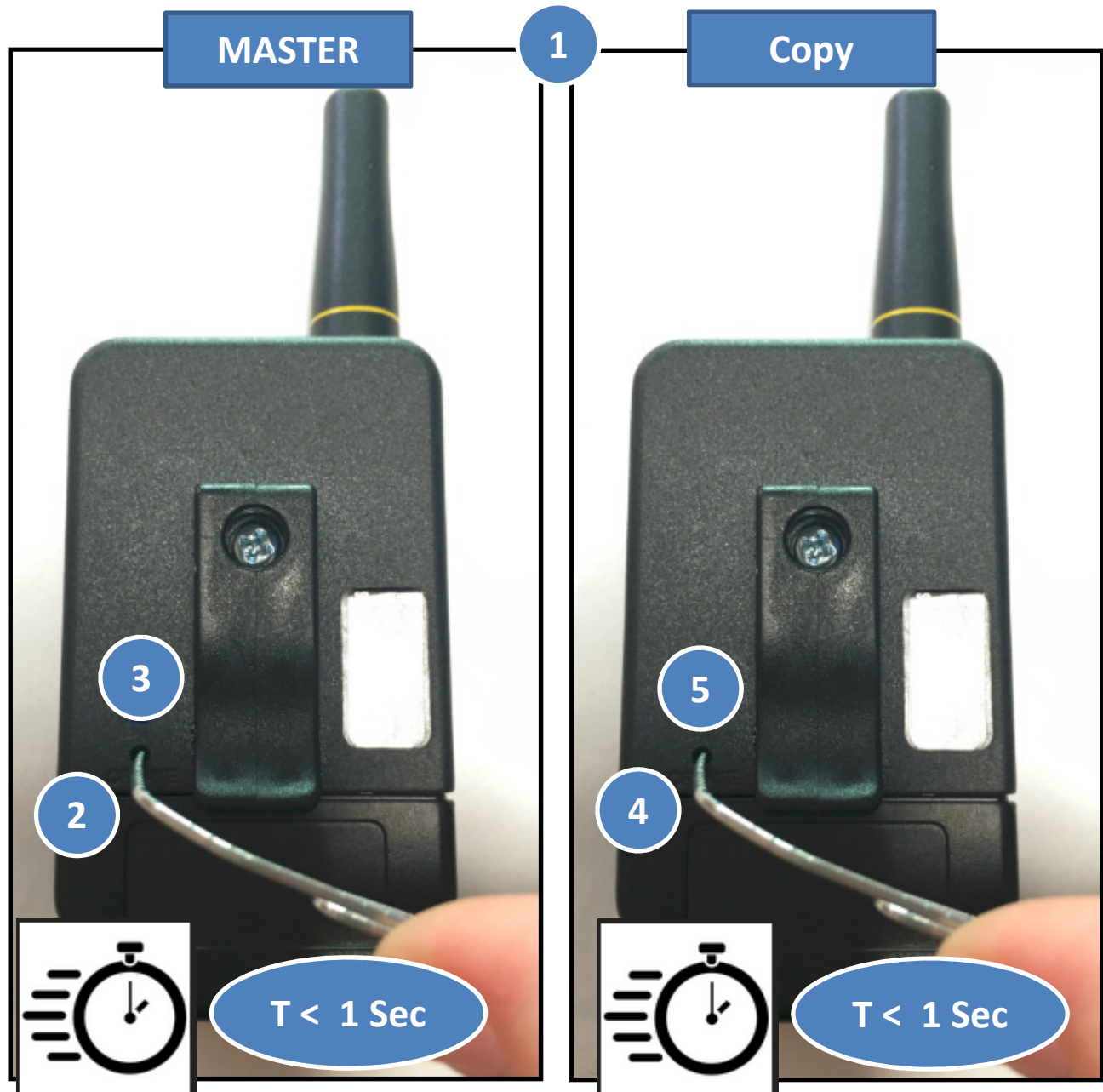
***Note: All transmitters are shipped by Roll Rite as MASTER Transmitters***

## ***Changing a MASTER Transmitter to a Copy Transmitter***



- 1. Press the pairing button on the MASTER transmitter for 5 times and hold on the 5<sup>th</sup> time until the BLUE LED flashes twice. The configuration will change from MASTER to Copy.**
- 2. Check to be sure the transmitter is now a Copy: Press the pairing button once. The blue LED will flash one time and repeat single flash pattern for 10 seconds.**
- 3. Continue to directions on creating a Copy Transmitter by copying the pairing data from the MASTER Transmitter**

## Creating a Copy Transmitter from a MASTER Transmitter



1. Set the two transmitters side by side on flat surface as shown.
2. Press the **MASTER** pairing button for less than one second
3. Observe the **MASTER** transmitter **BLUE LED** will begin to flash
4. Press the **Copy** pairing button for less than one second
5. Observe the **Copy** transmitter **BLUE LED** will begin to flash
6. After the flashing stops on both transmitters, the Copy pairing is complete. Both transmitters will now operate the same receiver

# **Section Five**

## **MAINTENANCE AND TROUBLESHOOTING**



# Changing the Transmitter Battery

**NOTE: Changing the Battery DOES NOT AFFECT STORED PAIRING. It is not necessary to pair the transmitter to receiver after changing the battery.**



1

Remove the Rubber Protective Cover from the RF Transmitter

Replace the Key FOB battery when transmitter performance is inconsistent or the transmitter Red LED becomes dim

## Battery Specification:

- CR2032 Coin Cell
- Voltage = 3 Volts when battery is new
- Positive Terminal Faces Upward in Battery Bracket

2

Remove the Battery Cover from the Transmitter. Press at the center and slide down

3

Remove the Battery from the Battery Bracket by sliding the battery downward.

## Troubleshooting the Receiver

Problem	Possible Cause	Solution
System does not operate from Receiver switches	Truck Battery has low voltage	Turn off all vehicle accessories and running lights. Disconnect negative terminal from truck batteries. Wait 10 minutes. Check the vehicle battery voltage. If vehicle battery voltage is less than 12.0 Volts, replace vehicle batteries.
System does not operate from Receiver switches	Truck - to - Trailer harness or plug issue	With trailer plug inserted, using a multi-meter, check the Voltage between the BAT+ and GND terminals of the Motor Relay. It should be greater than 12V. Compare this value to battery voltage. If the motor relay input voltage is more than 2V lower than the battery voltage, isolate the problem to one or more components in the Truck to Trailer circuit and replace that circuit component.
System does not operate from Receiver switches	Motor Relay internal fault	With trailer plug inserted, using a multi-meter, check the Voltage between the BAT+ and GND terminals of the Motor Relay. This value should be greater than 12V. Next, check the voltage between the RF power Spade Terminals BAT+ and GND. The value at the RF power terminals should be the same as the value of the BAT+ and GND. If they are not, replace the Motor Relay.
System does not operate from Receiver switches	After running the first three tests presented in this table, the possible cause is the RF Receiver	Check all Power and Ground connections between vehicle battery and RF Receiver. Check motor relay operation. Assure the device is being powered up properly – see “Starting the System”. If the receiver LED does not flash once when power is connect, replace the RF Receiver

## Troubleshooting the Transmitter

Problem	Possible Cause	Solution
System operates from receiver switches but does not operate from transmitter	Transmitter is not in operational mode	Turn the transmitter on
System operates from the Transmitter intermittently	Transmitter Battery is low	Change Transmitter Battery
System operates from the Transmitter intermittently	Transmitter turned OFF while in use	Do not turn the transmitter off while running the system
Transmitter does not power up	Transmitter Battery	Change Transmitter Battery
Transmitter does not power up	Receiver is in Lock Out Mode	Turn receiver on to Operating mode
Transmitter does not power up	Transmitter is not paired	Pair transmitter to receiver.