



A Safe Fleet Brand

***Roll Rite, LLC and its entire staff would like to not only Thank You but congratulate you on your purchase of one of what we feel to be the finest line of tarping systems in the industry.***

## *Tarp Return*

RR Part # 101828

*Questions? Contact Customer Service @ 800-297-9905  
Or  
Parts Diagrams see "Parts and Diagrams" section on web at [www.rollrite.com](http://www.rollrite.com)*

# In this booklet you will find:

<b>INSTALLATION INSTRUCTIONS</b> .....	<b>3</b>
INTRODUCTION: .....	3
THINGS TO CONSIDER BEFORE INSTALLATION: .....	3
MOUNTING: .....	4
ATTACHING THE STRAP TO THE AXLE: .....	8
<b>OPERATING MANUAL</b> .....	<b>11</b>
<b>MAINTENANCE MANUAL</b> .....	<b>11</b>

## Installation Instructions



- Failure to follow installation requirements may result in potentially hazardous condition
- Read all product information and instructions before proceeding with installation



*DO NOT REMOVE THE BOLTS THAT HOLD THE TWO HALVES OF THE UNIT TOGETHER, THIS CAN RESULT IN INJURY.*

### ***Introduction:***

The tarp return is to be mounted on the lock down side of the tarp system (the side with the lock down lips).

As the tarp winds towards the stationary side, the internal spring pressure in the wheel is increased.

### ***Things to consider before installation:***

Which way does the tailgate swing and will the return be in the way when the tailgate opens?

How far down does the return have to be mounted from the top of the trailer?  
We recommend 24 - 48 inches down.

*Questions? Contact Customer Service @ 800-297-9905*

*Or*

*Parts Diagrams see "Parts and Diagrams" section on web at [www.rollrite.com](http://www.rollrite.com)*

## Mounting:

1. Determine which side of the trailer the tarp system is to be stowed on. The return will be mounted on the opposite side.

Note: It is possible to mount the return on either side of the trailer. For example, if the strap is to come off of the "front" of the spool on the driver's side, mount the spool as shown in figure 1 below. For all other mounting options, see illustration below. Also note that you can only see the assembly bolts from one side of the part.

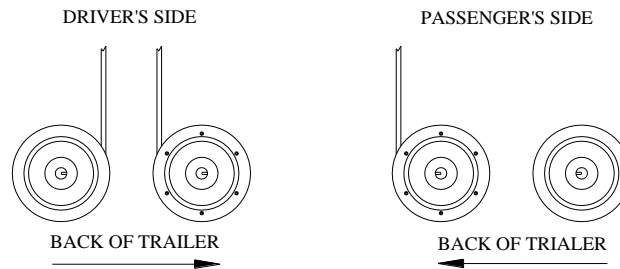


Figure 1

2. Determine where to mount the tarp return. There are many possible mounting positions. Recommended locations are: 24 - 48" down the side wall of the trailer (see figure 2), or on the back face of a solid rear end cap (if your system is so equipped, see figure 3).

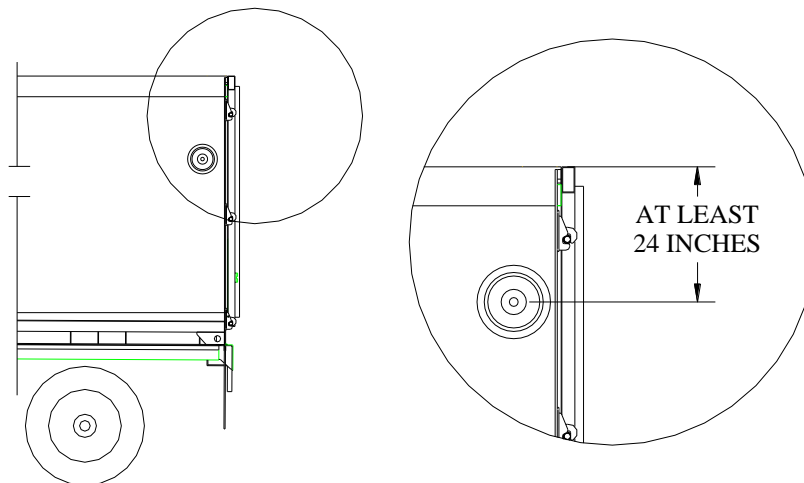


Figure 2

Questions? Contact Customer Service @ 800-297-9905

Or

Parts Diagrams see "Parts and Diagrams" section on web at [www.rollrite.com](http://www.rollrite.com)



Figure 3

3. Mark the location of the pin.

Note: If the pin lands in between 2 side posts, it is necessary to mount a bracket to the nearest post then mount the pin to that bracket. The plate has to be mount flush with the outside of the top rail of the trailer, add shim if necessary.

4. Remove the pin from the spring unit by removing the snap ring.

Note: When mounting the return to a thin wall trailer, such as a grain trailer, use a reinforcement plate. Roll Rite can provide brackets to accommodate most thin wall trailer applications. If you are going to use a reinforcement plate, follow steps a-c below. Otherwise, continue to step 5 below.

- (a). Place the reinforcement plate against the side of the trailer in the desired location. Make sure that it sets inside of the feature lines.
- (b). Fasten the plate to the trailer, such that a minimum 2 of the interior ribs are fastened to. This will ensure a rigid mount.
- (c). Place the pin in the desired location on the plate.

5. Trace the (2) 1/2" holes in the pin plate onto the post, trailer or mounting bracket.
6. Drill the 2 clearance holes in the trailer for the 1/2" bolts.

7. Assemble the eye bolt to the strap guide bracket per figure 4 below. Use the provided 5/16" nylock nut on the back side. The center of the eye should line up with the center of the strap channel on the tarp return when fully assembled (see figure 4).

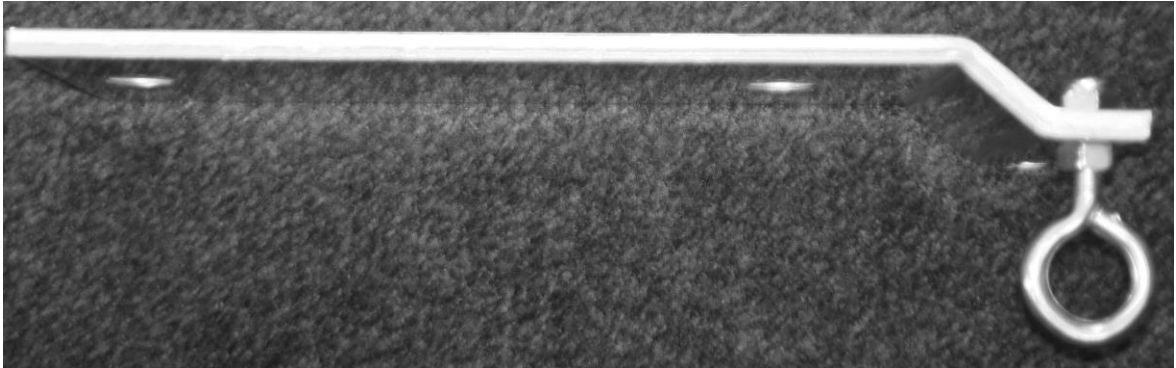


Figure 4

8. Bolt the pin and the strap guide bracket to the trailer using the (2) 1/2" bolts and "nylock" nuts provided. See figure 5 below for the correct orientation.

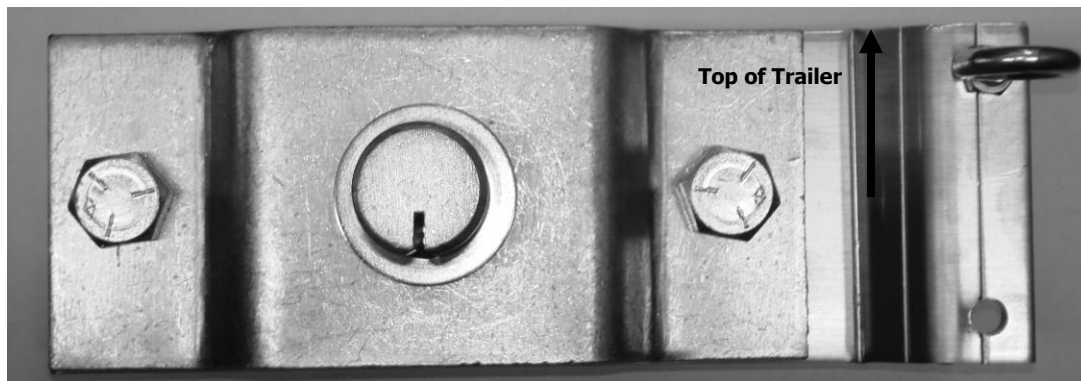


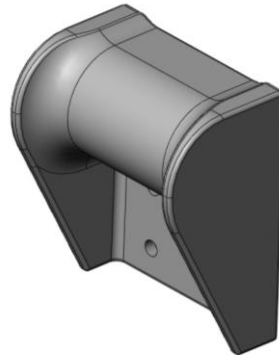
Figure 5

- Slide the spring loaded wheel onto the pin as determined in figure 1 on page 3 (see figure 6 below as an example).



**Figure 6**

- Slide the bushing that was previously removed back onto the pin.
- Put the snap ring on the pin and make sure that it is completely seated in the groove.
- Locate the strap return guide. Refer to figure 7.



**Figure 7**

- Determine where the strap guide is to be mounted. The guide should be mounted so that it lines up vertically with the strap from the tarp return.
- Mount the guide so the top of the part is about flush with the top of the trailer. See figure 8(a). On existing systems, it may be necessary to cut the locking lip back. When installing the return on a grain trailer or "thin wall trailer", mount the guide on top of the back cap as shown in figure 8(b).

*Questions? Contact Customer Service @ 800-297-9905*

*Or*

*Parts Diagrams see "Parts and Diagrams" section on web at [www.rollrite.com](http://www.rollrite.com)*

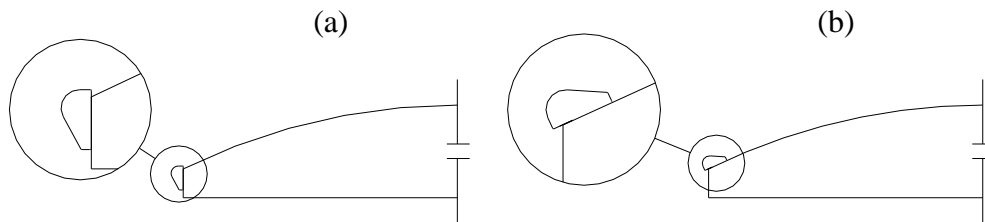
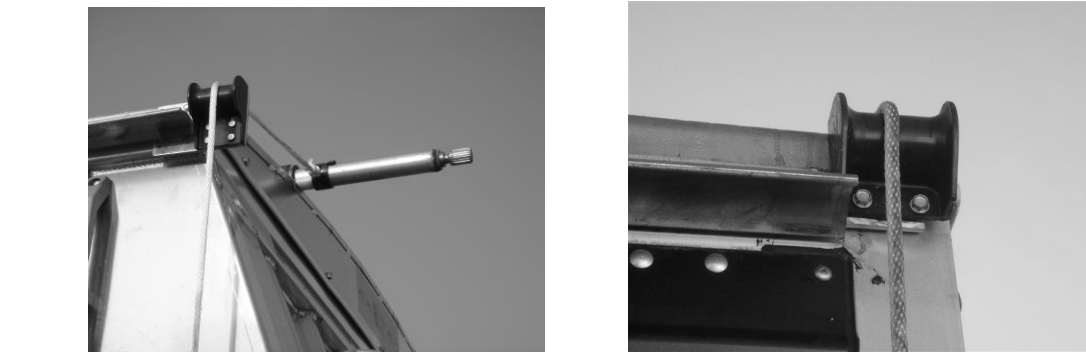


Figure 8



### ***Attaching the Strap to the Axle:***

The tarp needs to be on the locking lip side of the trailer. Let it hang there. Refer to figure 9.

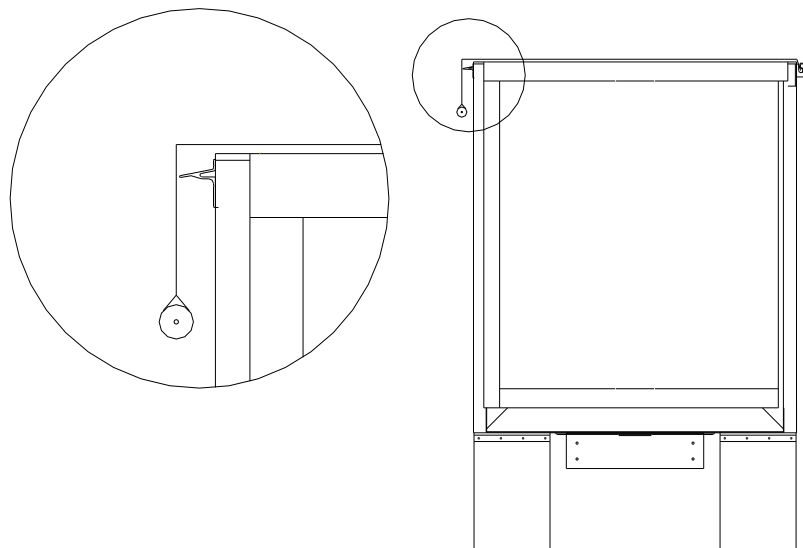


Figure 9

1. Install the strap bushing to the axle. Line up the bushing with the tarp return and the strap return guide. Lock in position using the provided strap bushing retainers as shown in figure 10.

*Questions? Contact Customer Service @ 800-297-9905*

*Or*

*Parts Diagrams see "Parts and Diagrams" section on web at [www.rollrite.com](http://www.rollrite.com)*



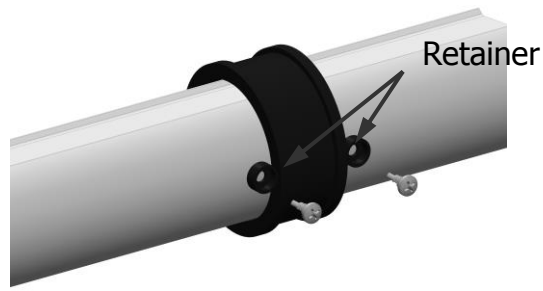


Figure 10



- During and after installation, spring energy will be stored in the return housing. Use caution during the next couple of steps of the installation to avoid sudden release of spring energy.
2. With the loop on the end of the strap fed through the eye bolt, un-coil enough strap from the tarp return to reach the back of the axle but still remains snug as shown in figure 11. Do not unwind the return; remove the strap.



Figure 11

3. Loop strap over the end to the axle and slide it over the bushing, see figure 12. The loop should be a snug fit to the bushing.



**Figure 12**

4. If applicable install the tarp axle end cap onto the axle and fasten it in place using the bolts provided.
5. Add 1 pre-wrap to the spool by wrapping the strap around it 1 time. This will add more tension to the return, if it is necessary.

### **Check the Return:**

Run the system. Make sure that the wheel does not run out of strap and that the strap stays on the guide throughout the tarping cycle.

## Operating Manual

The tarp return will operate automatically with the tarping system. See the operating manual with your tarping system for instructions.

## Maintenance Manual

*Roll Rite, LLC designs its tarping systems and power kits to be as maintenance free as possible, contributing to the overall value of the product.*

**Maintenance intervals vary based on environmental conditions.**

Roll Rite, LLC recommends that:

- All electrical connections should be cleaned and greased regularly to prevent corrosion (fill all electrical boots, limit switch boots, etc. with dielectric grease). Electrical connections can be found at all motors, switches, contactors, limit switches, control boxes and batteries.
- All bearings with grease fittings and tower legs must be greased regularly.
- Check and tension all set screws. Set screws should be tightened until they touch and then torque them  $\frac{3}{4}$  of a revolution beyond that.
- Check motor mounting bolts and torque to 70 in-lbs (5.8 ft-lbs).
- All mounting hardware should be checked to insure all system components are securely fastened.
- Visually inspect all moving parts for abnormal or excessive wear.

Questions? Contact Customer Service @ 800-297-9905

Or

Parts Diagrams see "Parts and Diagrams" section on web at [www.rollrite.com](http://www.rollrite.com)

***Once Again Roll Rite, LLC would like to Thank You for your business and offer you not only the finest product in our industry, but the best customer service as well. We would like to invite you to visit our web site at [www.rollrite.com](http://www.rollrite.com), where you can find a complete set of parts diagrams.***

***Additionally we would love to hear from you if you have any questions or issues:***

**Phone - 800-297-9905**

**Fax – 888 TARP FAX (888-827-7329)**

**E-mail – [info@rollrite.com](mailto:info@rollrite.com)**

*Questions? Contact Customer Service @ 800-297-9905*

*Or*

*Parts Diagrams see "Parts and Diagrams" section on web at [www.rollrite.com](http://www.rollrite.com)*